

# HRSA

## Investing in the Nation, Investing in Georgia

Rosie Mangual

Public Health Analyst

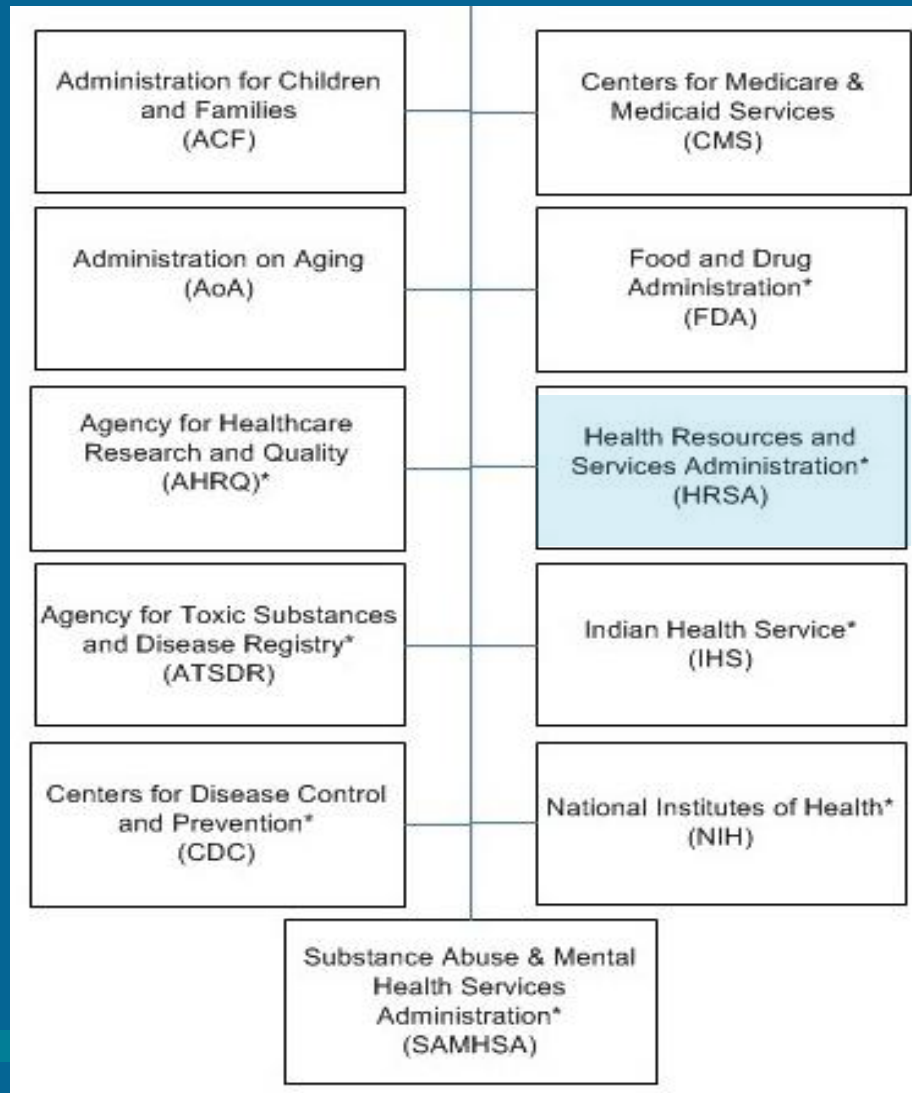
U.S. Department of Health and Human Services

Health Resources and Services Administration

Atlanta Office of Regional Operations



# Department of Health & Human Services (HHS) Secretary Kathleen Sebelius



\* Designates components of the U.S. Public Health Service



# HRSA Goals

- Improve Access to Quality Health Care and Services
- Strengthen the Health Workforce
- Build Healthy Communities
- Improve Health Equity



# HRSA: Key Focus Areas

- Primary Care Access
- Workforce Training, Recruitment and Retention
- Serving Those with HIV/AIDS
- Maternal and Child Health Block Grant
- 340B Discount Drug Program
- Organ Donation



HRSA Administrator Mary Wakefield



# Health Center Program Overview

## (Calendar Year 2010)

### 19.5 Million Patients

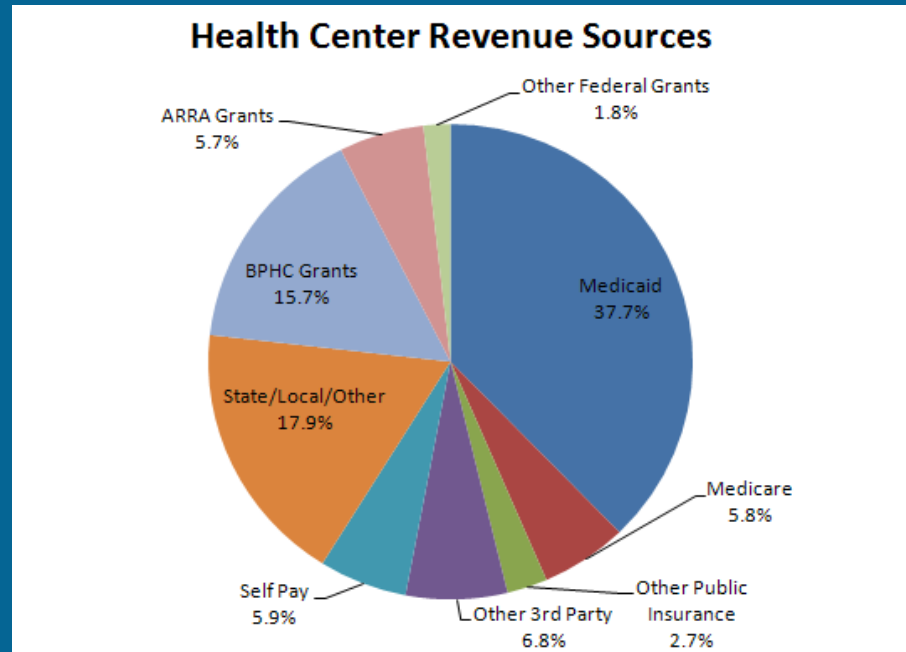
- 93% below 200% poverty
- 38% uninsured
- 62% racial/ethnic minorities
- 1,052,000 homeless individuals

### 77 Million Patient Visits

- 1,124 grantees
- 8,100+ service sites

### Over 131,000 Staff

- 9,592 physicians
- 6,362 NPs, PAs, & CNMs



Source: HRSA, Uniform Data System, 2010



# Health Center Services

Services	# of Patients Served
Medical Services	16,166,416
Dental Services	3,438,340
Mental health services	758,131
Substance abuse services	114,565
Other prof. services	525,832
Enabling Service	1,720,626



# HRSA – National Health Service Corps

8,961 NHSC clinicians

- ❖ 4,887 provide primary medical care
- ❖ 1,249 provide dental care
- ❖ 2,825 provide mental health care
- ❖ 4,580 are working in urban areas,
- ❖ 4,721 in rural communities



# HRSA – Ryan White HIV/AIDS Program



- Over 500,000 people living with HIV/AIDS receive services through more than 900 HRSA-funded Ryan White clinics.
- Two-thirds are members of minority groups.



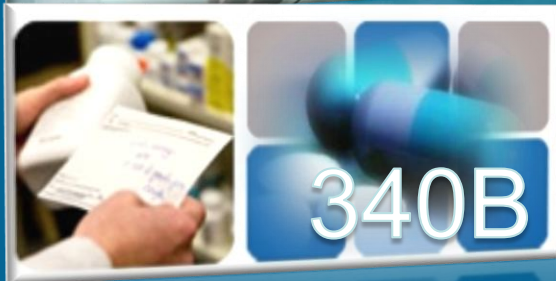
# HRSA – Maternal and Child Health



- Our Maternal and Child Health block grants to states pay for health care services, screening and counseling that reach 6 of every 10 women in the U.S. who give birth and their infants
- 34 million women, infants, children, and adolescents benefit from HRSA's maternal and child health programs
- 102 Healthy Start sites in communities at highest risk for infant mortality in 38 states, the District of Columbia and Puerto Rico.
- Cervical cancer screens are a built-in component of these nationwide programs.



# HRSA – Healthcare Systems



- 27,505 residents in the nation received transplants in 2009. Today and every day, about 77 people in the U.S. receive an organ transplant and 19 people die waiting for a donated organ.
- By participating in the 340B Drug Pricing Program, safety net providers will save approximately \$2.5 billion on their estimated \$5 billion outpatient drug expenditures this year.

# Office of Rural Health Policy

- “Voice for Rural” within HHS
- Rural-Focused Review of HHS Regulations
  - Research and Policy Development
- Rural-Specific Grant Programs
- Technical Assistance



# The Improving Rural Health Initiative: Key Elements

- Building a Programmatic “Evidence Base”



- Health Workforce Recruitment and Retention



- Telehealth/HIT Coordination



- Cross Governmental Collaboration



# Rural Health Evidence Based

## COMMUNITY HEALTH WORKERS EVIDENCE-BASED MODELS TOOLBOX

HRSA OFFICE OF RURAL HEALTH

U.S. Department of Health and Human Services  
Health Resources and Services Administration

August 2011



## TABLE OF CONTENTS

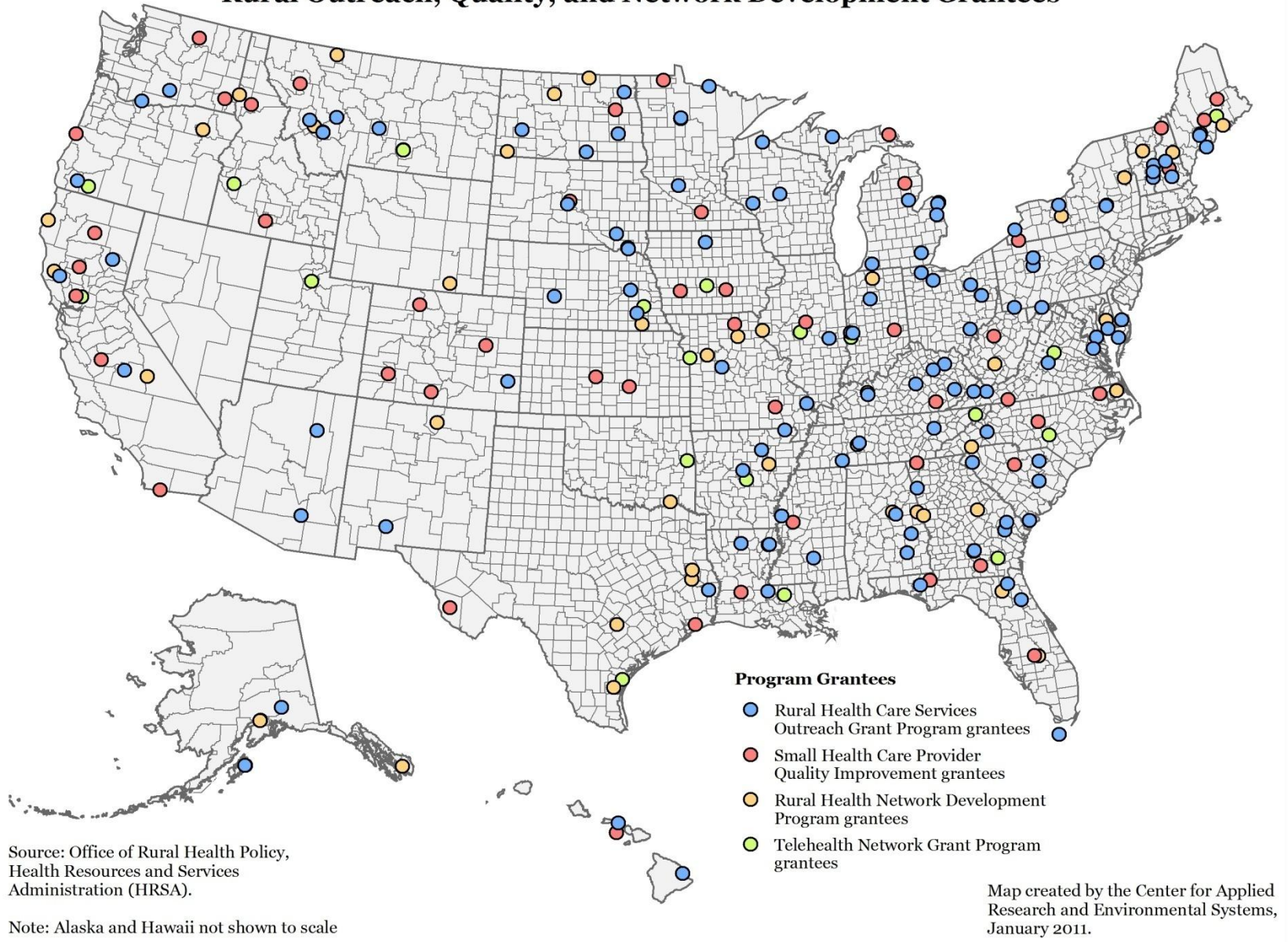
PREFACE.....	4
MODULE 1: INTRODUCTION TO COMMUNITY HEALTH WORKERS.....	4
1. Who are Community Health Workers (CHWs)?.....	4
2. What are the roles of CHWs?.....	5
3. What are the advantages of including CHWs in your rural program?.....	5
MODULE 2: CHW PROGRAM MODELS.....	6
1. Are there different models of CHW programs?.....	6
2. How have CHW programs served rural, frontier, and tribal communities?.....	9
3. How can you adapt CHW programs to meet the unique needs of your community?.....	9
MODULE 3: TRAINING APPROACHES FOR CHWS.....	9
1. Is there a standard curriculum for training CHWs?.....	9
2. What types of training materials are available for CHW programs?.....	10
3. Does our State have a CHW certification program?.....	10
4. How have programs trained CHWs?.....	11
MODULE 4: IMPLEMENTATION OF CHW PROGRAMS.....	11
1. What resources will you need to implement a CHW program?.....	11
2. What do you need to consider before recruiting and hiring CHWs?.....	12
3. How are CHWs compensated?.....	12
4. What are the unique challenges of implementing CHW programs?.....	13
MODULE 5: PLANNING FOR SUSTAINABILITY.....	13
1. How do you plan for the sustainability of your CHW program?.....	13
2. What is a sustainability plan, and why do you need one?.....	14
3. What types of community resources are available for planning for sustainability?.....	14
4. Which foundations and other organizations have funded CHW programs and research?.....	15
MODULE 6: MEASURING AND EVALUATING THE IMPACT OF CHW PROGRAMS.....	16
1. How do you evaluate the impact of your CHW Program?.....	16
2. What types of metrics are commonly used in evaluations of CHW programs?.....	16
MODULE 7: DISSEMINATION OF CHW RESOURCES AND PROMISING PRACTICES.....	17
1. How can you disseminate your CHW promising practices to other communities?.....	17
MODULE 8: RURAL CHW PROGRAM CLEARINGHOUSE.....	18
1. What are some examples of rural CHW programs?.....	18



<http://www.hrsa.gov/ruralhealth/pdf/chwtoolkit.pdf>



## Telehealth Network Grant Programs and Community-Based Rural Outreach, Quality, and Network Development Grantees



# Upcoming ORHP Funding Opportunities

## FY 2011:

### Rural Network HIT Program

- Target Audience:
  - Neediest organizations
  - Stage 1 & 2 of MU
- Availability: 2011
- # of new awards: 40
- Funding: \$300K a year (3-yrs)
- Start Date: Sep. 2011
- Contact: Marcia Green, [mgreen@hrsa.gov](mailto:mgreen@hrsa.gov)

\*All funding opportunities will be available on [www.grants.gov](http://www.grants.gov).

## FY 2012:

### Network Planning (HRSA-12-084 )

- Availability: June, 2011
- # of new awards: 15
- Funding: \$85K a year (1-yr)
- Start Date: March, 2012
- Contact: Eileen Holloran, [eholloran@hrsa.gov](mailto:eholloran@hrsa.gov)

### Outreach Program

- Availability: Sep. 2011
- # of new awards: 80-11
- Funding: \$150K (Yr 1), \$125K (Yr 2), \$100K (Yr 3)
- Start Date: May 1<sup>st</sup>, 2012
- Contact: Kathryn Umali, [kumali@hrsa.gov](mailto:kumali@hrsa.gov)



# HRSA in the State of Georgia

## Health Center Program in Georgia

- 28 health center grantees
  - Operate 157 health center sites
  - Care for 312,039 people
  - Support 1,610 jobs

▪ Albany Area Primary Health Care ▪ Athens Neighborhood Health Center, Inc. ▪ Community Health Care Systems, Inc. ▪ Curtis V. Cooper Primary Health Care ▪ Diversity Health Center ▪ East Georgia Healthcare Center ▪ First Choice Primary Care ▪ Four Corners Primary Care Center ▪ Georgia Highlands Medical Services ▪ Georgia Mountains Health Services ▪ J.C. Lewis Primary Health Care Center ▪ McKinney Community Health Center ▪ Medlink Georgia ▪ Neighborhood Improvement Project ▪ Oakhurst Medical Centers ▪ Palmetto Health Council ▪ Primary Care of Southwest Georgia ▪ Primary Healthcare Centers ▪ Saint Joseph's Mercy Care Services ▪ South Central Primary Care Center ▪ Southside Medical Center ▪ Southwest Georgia Health Care ▪ TenderCare Clinic ▪ Tri-County Health Systems ▪ Valley Healthcare System ▪ West End Medical Centers ▪ Whiteford Community Program



# HRSA in the State of Georgia

## National Health Service Corps

- 192 NHSC
- 102 provide primary medical care
- 30 provide dental care
- 60 provide mental health care
- 105 are working in urban areas
- 93 in rural communities\*\*

*\*\* some NHSC clinicians may serve in both urban areas and rural communities*



# HRSA in the State of Georgia

## Maternal and Child Health

- FY2010: \$25,895,909 total funding, to 21 grantees, through 25 grants
- In 2009, the Maternal and Child Health Block Grant Program served:
  - 73,134 pregnant women
  - 150,804 infants
  - 372,849 children (1-22 yrs. Old)
  - 35,049 children with special health care needs



# HRSA in the State of Georgia

## Healthcare Systems

- 729 Georgia residents received transplants in 2009
- 872 participating providers through the 340B Program



# HRSA in the State of Georgia

## Rural Health

- FY2010: \$3,995,453 total funding, to 20 grantees, through 22 grants

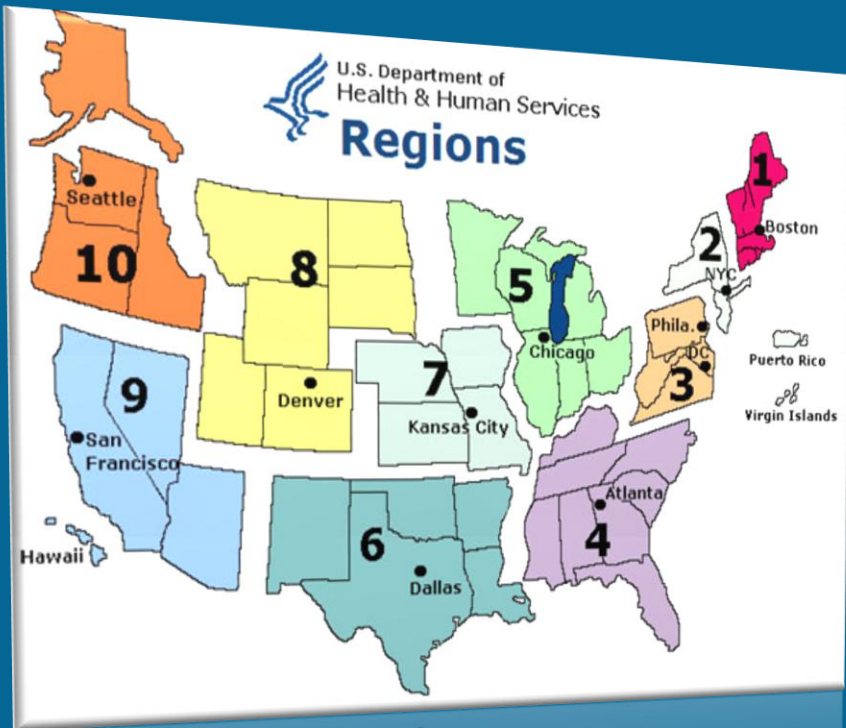
Evans County Health Department • Georgia Southern University Research & Service Foundation • Irwin County Board Of Health • Polk County Health Department • Evans County Health Department • Georgia Southern University Research & Service Foundation • Troup Cares, Inc. • Irwin County Board Of Health • Polk County Health Department • Georgia Mountains Health Services, Inc. • Flatlanders Community Health Center • North Georgia Health Care Center • South Central Primary Care Center



# ACA in Georgia

- Providing New Benefits and Lowering Costs for Medicare Beneficiaries
- Bringing Insurance Reforms to Georgia Residents



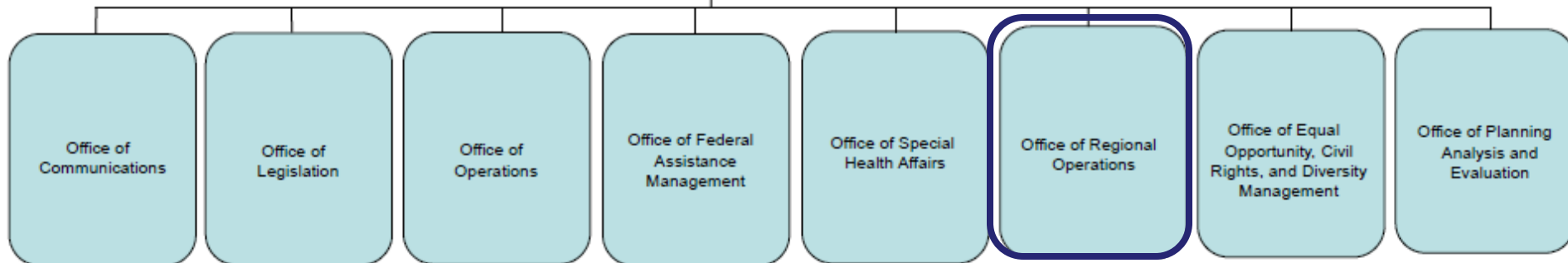
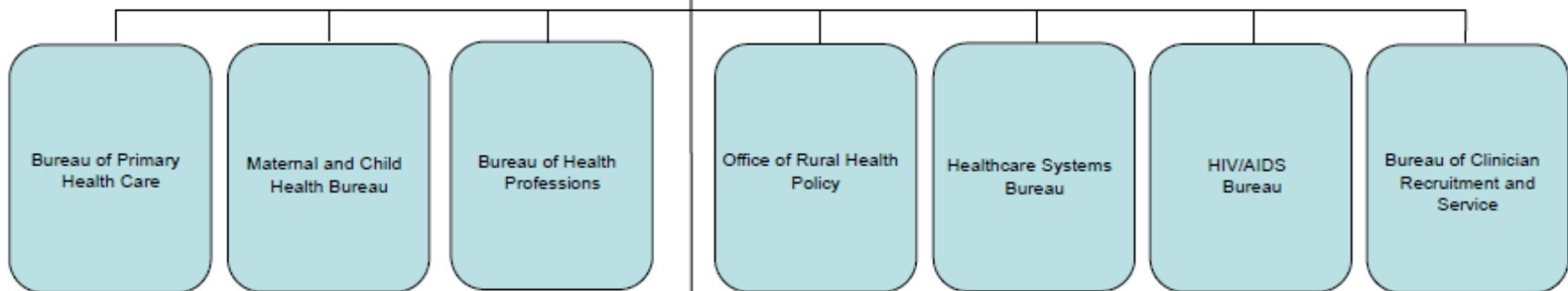
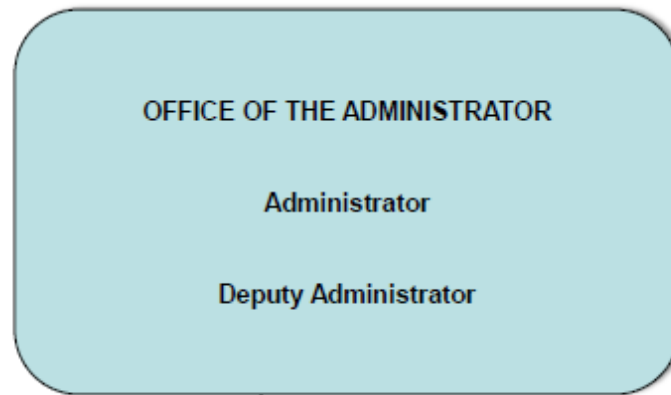


*HRSA's feet on the ground*

# OFFICE OF REGIONAL OPERATIONS



# Health Resources and Services Administration



# Office of Regional Operations

## Core Functions

- Provide leadership on HRSA mission , goals, and priorities in the regions.
- Provide ongoing surveillance and analytic reports on health care environmental trends.
- Generate effective collaboration between HRSA grantees and other stakeholders in States .
- Provide grantee assistance via site visits in partnership with HRSA programs (Program Integrity)
- Provide site development, recruitment and retention support for NHSC clinicians.



# Office of Regional Operations

## Scope of Work

- HRSA representation
- State level collaboration
- Interagency Collaboration



# Initiatives

- Healthy Weight Collaborative

<http://www.collaborateforhealthyweight.org/>

- Integration of Primary and Behavioral Health Services

[http://www.thenationalcouncil.org/cs/center\\_for\\_integrated\\_health\\_solutions](http://www.thenationalcouncil.org/cs/center_for_integrated_health_solutions)

- Patient Safety and Clinical Pharmacy Services Collaborative

<http://www.hrsa.gov/publichealth/clinical/patientsafety/index.html>



# HRSA Key Web Resources

- HRSA's Funding Opportunities:  
<http://www.hrsa.gov/grants/index.html>
- HRSA Behavioral Health Webpage:  
<http://www.hrsa.gov/publichealth/clinical/BehavioralHealth/index.html>
- HRSA Healthy Weight Collaborative  
<http://www.collaborateforhealthyweight.org/region4.html>.
- HRSA Patient Safety and Clinical Pharmacy Services Collaborative  
<http://www.hrsa.gov/patientsafety>
- HRSA Grantees with Active Projects by Program or State:  
<http://granteefind.hrsa.gov>
- HRSA's Find a Health Center site:  
<http://findahealthcenter.hrsa.gov>
- National Health Service Corps (NHSC):  
<http://www.nhsc.hrsa.gov>



# Contact Information

Lisa Mariani  
Regional Administrator  
Health Resources and Services Administration  
Atlanta Office of Regional Operations  
(404) 562-4144  
[lmariani@hrsa.gov](mailto:lmariani@hrsa.gov)

Rosie Mangual  
Public Health Analyst  
Health Resources and Services Administration  
Atlanta Office of Regional Operations  
(404) 562-7979  
[rmangual@hrsa.gov](mailto:rmangual@hrsa.gov)

